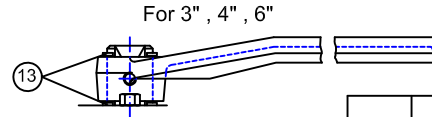
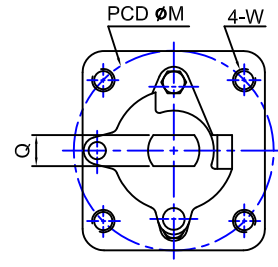


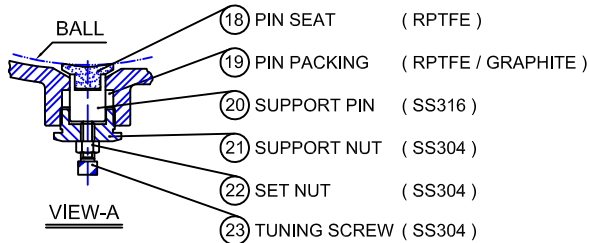
For 3" , 4"



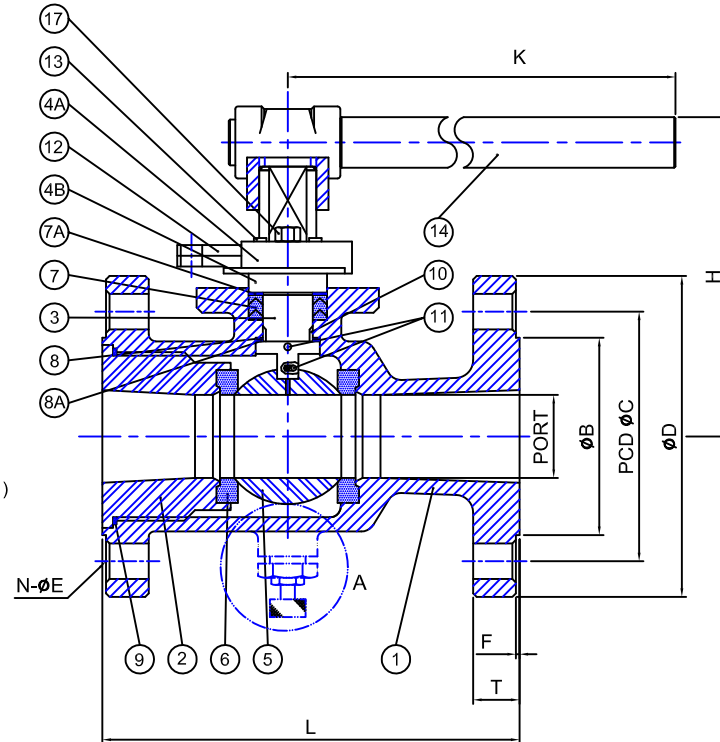
MATERIAL LIST

NO.	PART NAME	MATERIAL		Q'TY
		STAINLESS STEEL	CARBON STEEL	
1	BODY	A351-CF8M	A216-WCB	1
2	CAP	A351-CF8M	A216-WCB	1
3	STEM	SS316		1
4A	GLAND	A351-CF8	A216-WCB	1
4B	SLEEVE	SS304		1
5	BALL	A351-CF8M		1
6	SEAT	RPTFE		2
7	PACKING(1)	RPTFE / GRAPHITE		1
7A	PACKING(2)	50% PTFE + 50% 316		1
8	THRUST WASHER(2)	RPTFE		1
8A	THRUST WASHER(1)	50% PTFE + 50% 316		1
9	GASKET	RPTFE / GRAPHITE		1
10	STEM BEARING	RPTFE		1
11	ANTI-STATIC	SS316		2
12	TRAVEL STOPPER	SS304	STEEL PLATED	1
13	SNAP RING	NICKEL PLATED CARBON STEEL		2~1
14	HANDLE	JUNCTION HEAD (FCD) / PIPE GRIP(S15C)		1
17	GLAND BLOT	SS304	CARBON STEEL	2

3" - 6" : LEVER OPERATION (HANDLE / FCD)



SUPPORT BALL DESIGN(12")



DIMENSIONS

unit:mm

SIZE	PORT	B	C	D	E	F	T	N	H	K	L	J	Q	G	P	M	W	CV	Torque (kgf-cm)	Weight (kgs)
3"	65	127	168	210	22	1.6	28.6	8	172	390	283	28	17	33.3	65.8	102	M10X1.5	360	1050	23.04
4"	76	157	200	254	22	1.6	31.8	8	195	390	305	28	17	44.5	78	102	M10X1.5	690	1300	34.2
6"	100	216	270	318	22	1.6	36.6	12	193	390	403	28	17	44.5	78	102	M10X1.5	990	1500	61.1
8"	150	270	330	381	25	1.6	41.3	12	285	650	419	43.5	26	42	91	125	M12X1.75	2300	4900	113.5
10"	200	324	387	444	29	1.6	47.7	16	294	950	457	43.5	26	42	91	125	M12X1.75	4000	7000	163
12"	242	381	451	521	32	1.6	50.8	16	372	1100	502	50	35	54	98	140	M16X2.0	7700	9700	

